

# SF Industries LLC

INDUSTRIAL APPLICATIONS CATALOG

2024-2025

|                                      |         |
|--------------------------------------|---------|
| • CONTENTS                           | Page 1  |
| • SOLAR LIGHT                        | Page 2  |
| ○ Specifications                     | Page 3  |
| • SOLAR LIGHTING SYSTEMS             | Page 4  |
| ○ Stanchion/Walkway Mounting System  | Page 4  |
| ○ Perimeter/Fence Mounting Systems   | Page 5  |
| ○ Shipping Container Mounting System | Page 6  |
| ○ Beam Mounting Systems              | Page 6  |
| ○ Building/Wall Mounting System      | Page 7  |
| • BEAM ANKR PRODUCTS & ACCESSORIES   | Page 8  |
| ○ Products & Accessories             | Page 9  |
| ○ Best Practices                     | Page 10 |
| ○ Structural Analysis                | Page 10 |
| ○ Applications                       | Page 11 |
| • FD CORNER DEVICE BOXES             | Page 12 |
| • APPENDICES                         | Page 13 |
| ○ DATA SHEETS                        | Page 14 |
| ➤ Beam ANKR                          | Page 14 |
| ➤ Beam ANKR MAX                      | Page 15 |
| ➤ FDX Corner Device Box - 4 inlets   | Page 16 |
| ➤ FDC Corner Device Box - 2 inlets   | Page 17 |
| ➤ FDT Corner Device Box - 1 inlet    | Page 18 |

# SOLAR LIGHT



## FIXTURE FEATURES

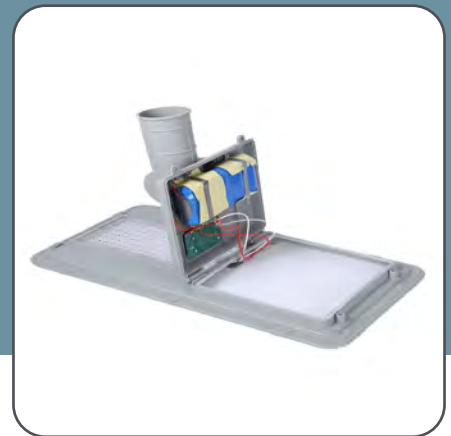
- 180 Watts
- 5000 Lumens
- Integrated and compact structure design.
- Die-cast Aluminum.
- Bridgelux high efficacy LED chips, 50,000hrs.
- Mono-crystalline solar panel.
- Solar conversion rate is >21%.
- High quality LiFePO4 li-ion battery,
- DOD>2000 cycles.
- Nema 4X / IP65 waterproof housing.
- 2 year manufacturer warranty.
- UL8801 Compliant.



Adjustable Fixture Angle  
Improves Light Distribution  
Improves Solar Capture

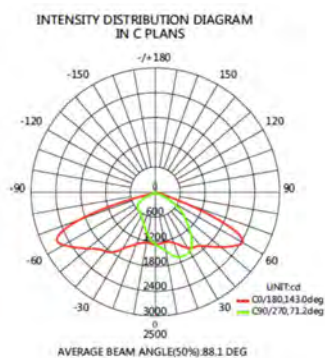


Dusk to Dawn Sensor  
Proximity Sensor  
Remote Control



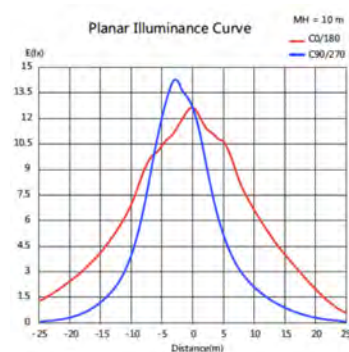
Easy Access to Power Supply  
and Control Components

## DISTRIBUTION



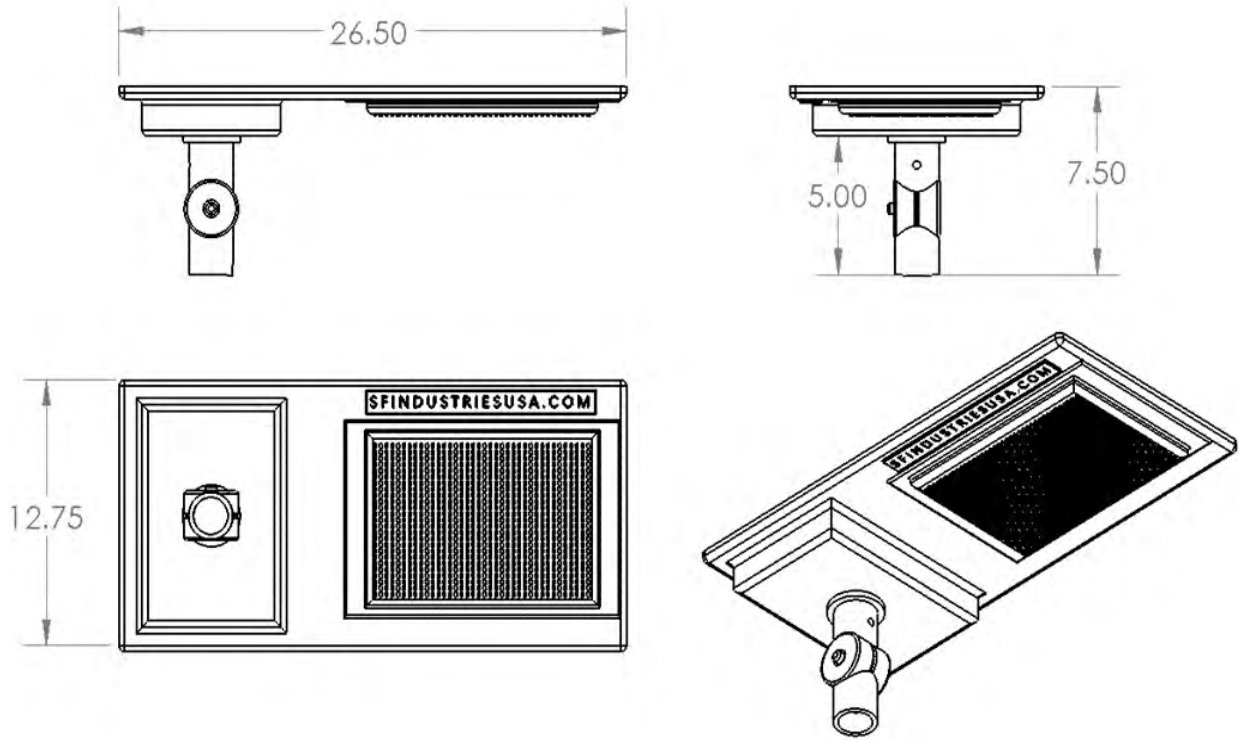
TYPE 4 - The 60 degree semi-circular light pattern is used for illuminating perimeters and mounting on the sides of buildings, beams, walls and walkways to provide forward lighting with minimal back lighting.

## ILLUMINANCE CURVE



Spacing - Depending on the application and actual mounting height the lights can be mounted between 30 - 40 feet spacing intervals.

# SPECIFICATIONS



|                        | LUMINAIRE                                 |
|------------------------|---|
| Model Number           | SFSL - 180 - 50                           |
| Solar Panel Power      | 50 W                                      |
| LED chips              | Bridgelux SMD3030                         |
| CCT / CRI              | CCT: 3000~6500K, Ra>70                    |
| Beam Angle             | 145° *70°                                 |
| Lumen flux (lm)        | 5000                                      |
| LiFePO4 Li-ion Battery | DOD>2000 35AH                             |
| Installation Height    | 10 - 15 ft.                               |
| Interval Distance (ft) | 30 - 40 ft.                               |
| Work Mode (default)    | 1/3/6/1H; 100%/70%/30%/80%.               |
| Charging time          | 6-7 Hours                                 |
| Working Time           | 12Hrs / Day, 3-5 day back up              |
| Control                | Optical + Intelligent timing control      |
| Enclosure              | Nema 4X / IP65                            |
| Operating Temperature  | 13 - 150°F (-25~+65°C)                    |
| Lifespan               | 50,000 Hours                              |
| Mounting               | 1.5" NPT (F)                              |
| Dimensions             | 26.5 x 12.75 x 7.5" ( 657 x 325 x 130 mm) |
| Weight                 | 15 lbs ( 7.1 KG)                          |

# SOLAR LIGHTING SYSTEMS

SF Industries provides a range of proprietary, custom designed Solar Lighting Systems for simple, safe and effective industrial installations. All materials are industrial grade and are CNC machined for quality. The components are kitted and shipped together in a single box/carton/container for ease of assembly on site.

## STANCHION/WALKWAY MOUNTING SYSTEM



**SOLAR LIGHT**  
MODEL SFSL-180-50



**2 X 5FT, 1.5" SCHEDULE 40 POLES**  
6061 T6 ALUMINIUM



**LOWERING HINGE**  
EASY ACCESS FOR MAINTENANCE  
AND CLEANING



**STANCHION RAIL MOUNT  
BRACKETS - ANGLE OR TUBULAR**

### BILL OF MATERIALS

1 x SOLAR LIGHT MODEL  
SFSL-180-50

2 x 5ft, 1.5" SCH 40 LIGHT  
POLES

1 x LOWERING HINGE

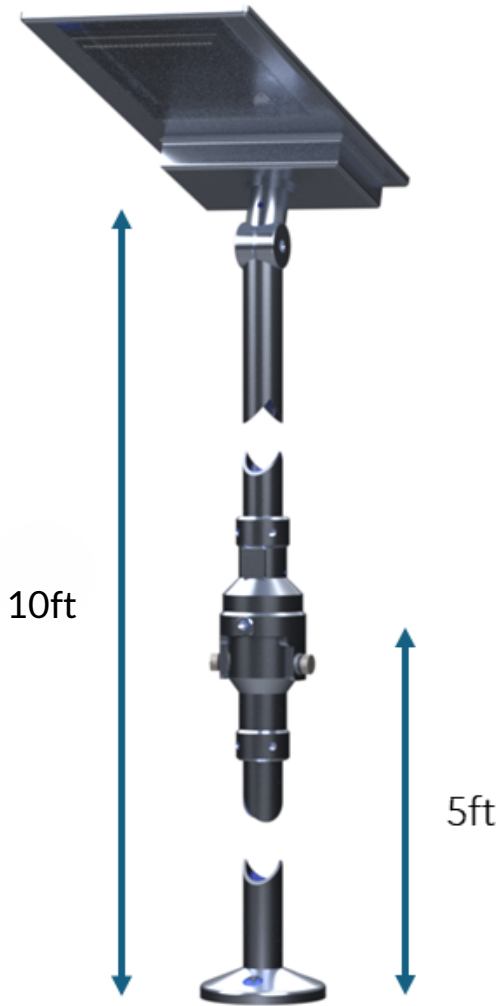
2 x STANCHION BRACKETS

INCLUDES FASTENING  
HARDWARE

P/N SSMLS-10180

P/N EMSLS-151801 (EARTH MOUNT)

P/N SMSLS-151802 (SURFACE MOUNT)



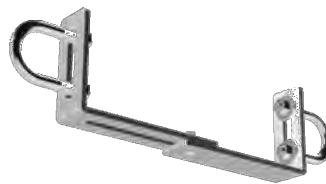
**SOLAR LIGHT**  
MODEL SFSL-180-50



**2 X 5FT, 1.5" SCHEDULE 40 POLES**  
6061 T6 ALUMINIUM



**LOWERING HINGE**  
EASY ACCESS FOR  
MAINTENANCE AND CLEANING



**FENCE STAND-OFF BRACKET**



**MOUNTING BASE**



**CAGE BOLT ASSEMBLY**  
FOR EARTH MOUNT INSTALLATIONS



**WEDGE ANCHOR BOLTS**  
FOR EXISTING PAD

## BILL OF MATERIALS

|                                   |
|-----------------------------------|
| 1 x SOLAR LIGHT MODEL SFSL-180-50 |
| 2 x 5ft, 1.5" SCH 40 LIGHT POLES  |
| 1 x LOWERING HINGE                |
| 1 x MOUNTING BASE                 |
| 1 x FENCE STAND-OFF BRACKET       |
| 1 x CAGE BOLT ASSEMBLY OR         |
| 3 x WEDGE ANCHOR BOLTS            |

# SHIPPING CONTAINER MOUNTING SYSTEM



**SOLAR LIGHT**  
MODEL SFSL-180-50

**30" X 1.5" SCHEDULE 40 POLE**  
6061 T6 ALUMINIUM

**CORNER CASTING ADAPTER**

## BILL OF MATERIALS

1 x SOLAR LIGHT MODEL SFSL-180-50

1 x CORNER CASTING ADAPTER

1 x 30", 1.5" SCH 40 LIGHT POLE

INCLUDES FASTENING HARDWARE

P/N SCALS - 3180C

# BEAM MOUNTING SYSTEMS

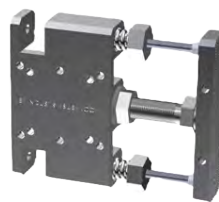
- P/N SOALS-01-3180A (BEAM ANKR C/W OFFSET BRACKET)
- P/N SFPLS-01-3180F (BEAM ANKR C/W FLANGE BRACKET)
- P/N SOALS-3180A (BEAM ANKR MAX C/W OFFSET BRACKET)
- P/N SFPLS-3180F (BEAM ANKR MAX C/W FLANGE BRACKET)



**SOLAR LIGHT**  
MODEL SFSL-180-50



**BEAM ANKR MOUNTING BRACKET**



**BEAM ANKR MAX MOUNTING BRACKET**



**30" X 1.5" SCHEDULE 40 POLE**  
6061 T6 ALUMINIUM



**FLANGE BRACKET**



**OFFSET BRACKET**

## BILL OF MATERIALS

1 x SOLAR LIGHT MODEL SFSL-180-50

1 x BEAM ANKR OR BEAM ANKR MAX

1 x OFFSET OR FLANGE BRACKET

1 x 30", 1.5" SCH 40 LIGHT POLE

INCLUDES FASTENING HARDWARE



**SOLAR LIGHT**  
MODEL SFSL-180-50



**30" X 1.5" SCHEDULE 40 POLE**  
6061 T6 ALUMINIUM



**WALL MOUNT BRACKET WITH**  
**INTERNAL SUPPORT PLATE**



## BILL OF MATERIALS

1 x SOLAR LIGHT MODEL  
SFSL-180-50

1 x 30", 1.5" SCH 40 LIGHT  
POLE

1 x WALL MOUNT BRACKET

INCLUDES FASTENING  
HARDWARE

P/N SBWMS-3180W

## INDUSTRIES SERVED

BUILDINGS & INFRASTRUCTURE

CONTAINER YARDS

DRILLING RIG SITES

MINING

WATER/WASTE WATER

MARINE PORTS

OIL, GAS & PETROCHEMICAL

RAIL YARDS

STORAGE FACILITIES

SOLAR POWER

GREEN FIELD/BROWN FIELD CONSTRUCTION

MILITARY & DISASTER AREAS



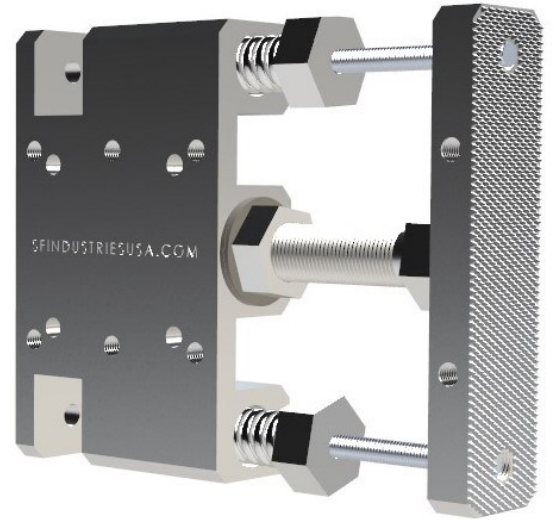




# BEAM ANKR



# BEAM ANKR MAX



PATENT PENDING

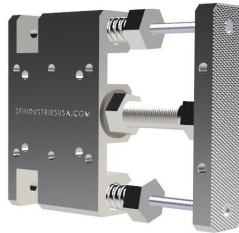
BETWEEN FLANGE  
BEAM MOUNTING SYSTEM



**BEAM ANKR**

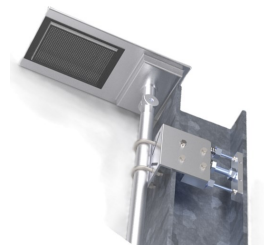
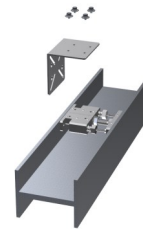


**BEAM ANKR MAX**



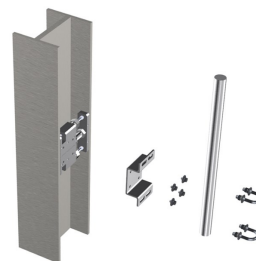
**FLANGE BRACKET KIT**

MOUNTING COMPONENTS IN  
LINE WITH THE FLANGE



**OFFSET BRACKET KIT**

MOUNTING COMPONENTS  
AWAY FROM THE BEAM  
AND WEB

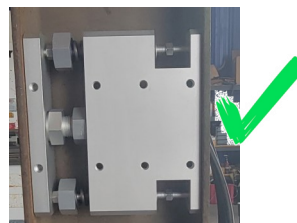
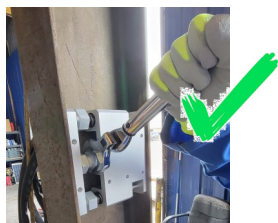


**STRUT KIT**

THE BEAM ANKR & BEAM ANKR  
MAX ARE PRE-DRILLED AND  
TAPPED FOR STANDARD STRUT



The Beam ANKR clamps in place without cutting , drilling, welding, bolting or bonding. It can be removed and relocated as many times as necessary. Beam ANKR does not alter the structural integrity of the beam system and keeps the user compliant with all codes.



**ANSI/AISC303-22 – Code of Standard Practice for Steel Buildings and Bridges:**

7.15 Cuts, Alterations, and Holes for Other Trades. *Neither the fabricator nor the erector shall cut, drill, or otherwise alter their work.*



**AWSD1.1:2000 – Structural Welding Code**

8.3.5 Loading During Operations. *The Engineer shall determine the extent to which a member will be permitted to carry loads while heating, welding or thermal cutting is performed .*

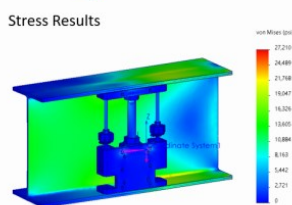
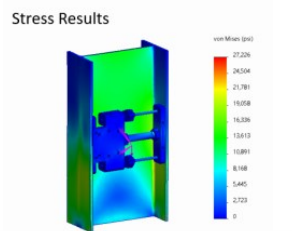
**STRUCTURAL ANALYSIS**

Engineering analysis was completed per the IBC 2021 standard. The bracket beam system was analyzed in both vertical and horizontal planes for stresses and deflection. Certified maximum operational loads were established through this process as follows:

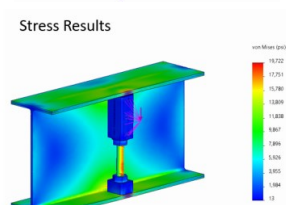
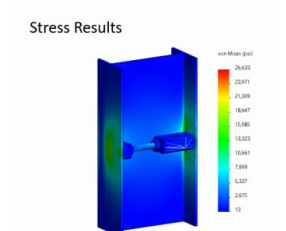
OPERATIONAL LOAD (lbs)    SLIP LOAD (lbs)

|               |         |          |
|---------------|---------|----------|
| BEAM ANKR     | 162 lbs | 3200 lbs |
| BEAM ANKR MAX | 310 lbs | 4400 lbs |

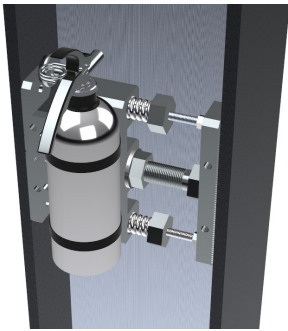
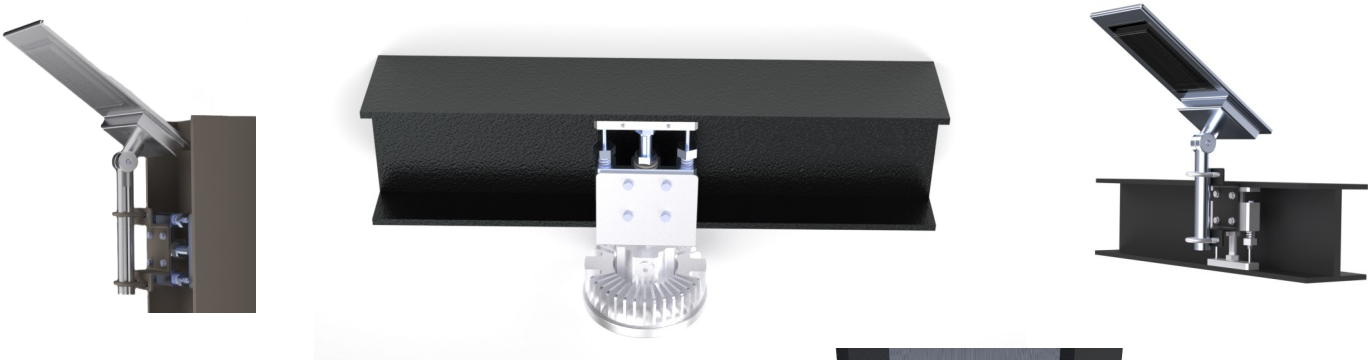
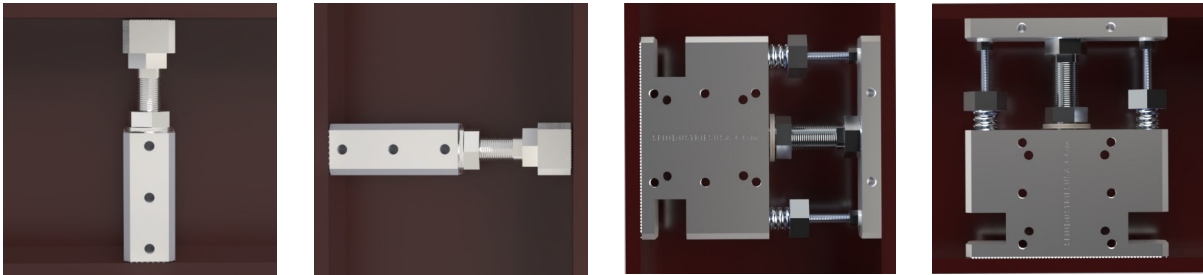
BEAM ANKR MAX



BEAM ANKR



The Beam ANKR and Beam ANKR MAX are certified to hold any load that does not exceed the max weights in either vertical or horizontal orientation.



Fire Extinguishers

Breaker Panels

Light Fixtures

Emergency Lighting

Sirens / Speakers

Control Stations

Junction Boxes

CCTV

Piping, Ducting & Conduit

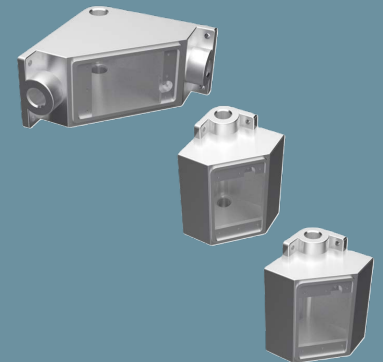


# FD DEVICE BOXES DESIGNED FOR IN-LINE CORNER INSTALLATIONS



PATENT AND UL/CA PENDING

**Easily Navigate Corners**  
**Use for FS or FD Devices exceeding 1 -5/8" Depth**  
**Fits All Standard Radius Corners**  
**Single Gang Entry**  
**3/4 inch Hub Threaded Entries**  
**Built in Ground Screw**



- **BEAM ANKR**
- **BEAM ANKR MAX**
- **FDX CORNER DEVICE BOX - 4 inlets**
- **FDC CORNER DEVICE BOX - 2 inlets**
- **FDT CORNER DEVICE BOX - 1 inlet**



# TECHNICAL DATA SHEET

## BEAM ANKR- I-BEAM MOUNTING BRACKET

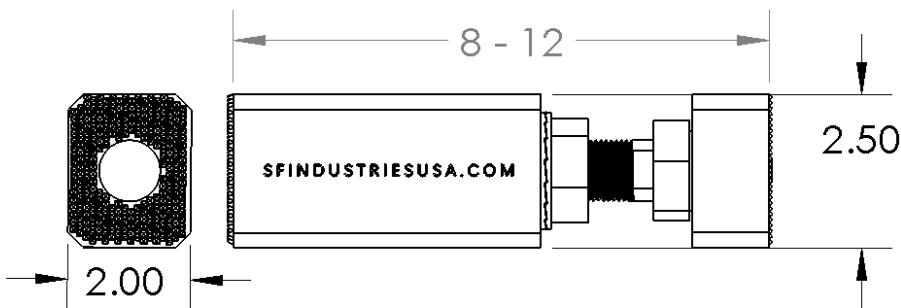
### DESCRIPTION

The BEAM ANKR is a between flange tension mounted bracket for a wide range of loads up to 162 lbs on standard beams. Adjustable to fit between beam flanges from 8 to 12". The mounting surface is pre-drilled and tapped for custom mounting and standard strut installation. Additional bracket kits are available for a number of OEM light fixtures and other loads.



P/N: SFIBA-81012

### TECHNICAL DATA



162 lb Operational Load Rating    Weight 3 lbs

3200 lb Pull Out Force

Clamp Bolt Torque 105 ft lbs

3/8" Threaded Mounting Holes

### LOAD DATA

Table of max operational load from BEAM ANKR mounting surface to load center of gravity.

| Distance (in) | 2   | 4   | 6  | 8  | 10 | 12 | 14 | 16 | 18 | 20 |
|---------------|-----|-----|----|----|----|----|----|----|----|----|
| Load (lbs)    | 162 | 100 | 72 | 57 | 47 | 40 | 34 | 30 | 27 | 25 |

### FEATURES

Anodized 6061 Aluminum

Knurled Gripping Surfaces

High Strength Clamping Bolt

Fully Adjustable from 8-12"

No Drilling, Welding or Bolting

Simple Installation

Temporary or Permanent Applications

**SF INDUSTRIES**

1 979 337 2355

sales@sfindustriesusa.com

www.sfindustriesusa.com

1910 EAST TOM GREEN ST

STE 1A

BRENHAM TEXAS 77833



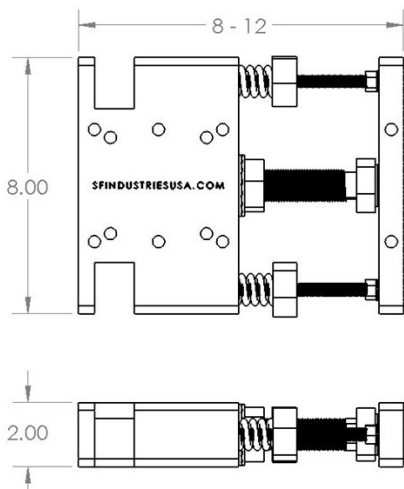
# TECHNICAL DATA SHEET

## BEAM ANKR MAX - I-BEAM MOUNTING BRACKET

### DESCRIPTION

The BEAM ANKR MAX is a between flange tension mounted bracket for a wide range of loads up to 310 lbs. Adjustable to fit between beam flanges from 8 to 12". The mounting surface is pre-drilled and tapped for custom mounting and standard strut installation. Additional bracket kits are available for a number of OEM light fixtures and other loads.

### TECHNICAL DATA



- 310 lb Load Rating
- 4400 lb Pull Out Force
- Weight 8 lbs
- Clamp Bolt Torque 105 ft lbs
- 3/8" Threaded Mounting Holes

### LOAD DATA

Table of max operational load from BEAM ANKR MAX mounting surface to load center of gravity.

| Distance (in) | 2   | 4   | 6   | 8   | 10 | 12 | 14 | 16 | 18 | 20 |
|---------------|-----|-----|-----|-----|----|----|----|----|----|----|
| Load (lbs)    | 310 | 186 | 133 | 103 | 84 | 71 | 62 | 55 | 49 | 44 |



P/N: SFIBAM-81011

### FEATURES

- Anodized 6061 Aluminum
- Knurled Gripping Surfaces
- High Strength Clamping Bolt
- High Torque Spring System
- Fully Adjustable from 8-12"
- No Drilling, Welding or Bolting
- Simple Installation
- Temporary or Permanent Applications

**SF INDUSTRIES**

1 979 337 2355  
 sales@sfindustriesusa.com  
 www.sfindustriesusa.com

1910 EAST TOM GREEN ST  
 STE 1A  
 BRENHAM TEXAS 77833





# TECHNICAL DATA SHEET

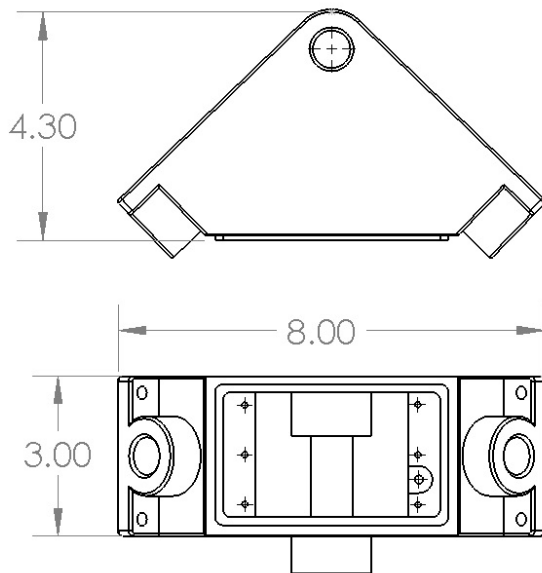
## FDX CORNER DEVICE BOX - 4 Inlet

### DESCRIPTION

The corner box series simplifies conduit runs by easily navigating internal corners in a wide variety of applications.



### TECHNICAL DATA



WEIGHT: 6 lbs

P/N: FSX-7524

### FEATURES

- Single Gang
- Zinc Electroplated Steel
- 4 X 3/4" Threaded Conduit Hubs
- Ground Screw
- Fits all FS & FD Flush Accessories
- Corner Mounting Lugs Chamfered
- Entries for Safe Cable Pulling

**SF INDUSTRIES**

1 979 337 2355  
sales@sfindustriesusa.com  
www.sfindustriesusa.com

1910 EAST TOM GREEN ST  
STE 1A  
BRENHAM TEXAS 77833



# TECHNICAL DATA SHEET

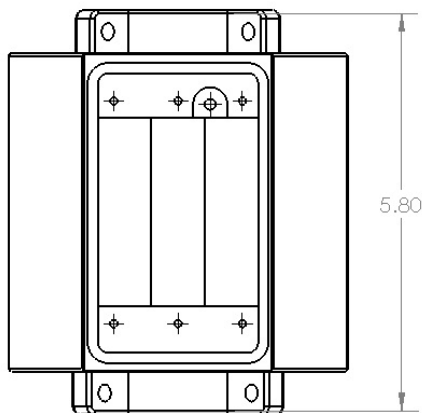
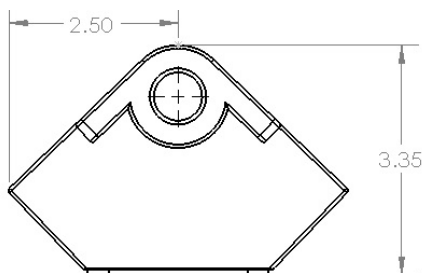
## FDC CORNER DEVICE BOX - 2 INLET

### DESCRIPTION

The corner box series simplifies conduit runs by easily navigating internal corners in a wide variety of applications.



### TECHNICAL DATA



WEIGHT: 4lbs

P/N: FDC-7524

### FEATURES

- Single Gang
- Zinc Electroplated Steel
- 2 X 3/4" Threaded Conduit Hubs
- Ground Screw
- Fits all FS & FD Flush Accessories
- Corner Mounting Lugs Chamfered
- Entries for Safe Cable Pulling

**SF INDUSTRIES**

1 979 337 2355  
sales@sfindustriesusa.com  
www.sfindustriesusa.com

1910 EAST TOM GREEN ST  
STE 1A  
BRENHAM TEXAS 77833



# TECHNICAL DATA SHEET

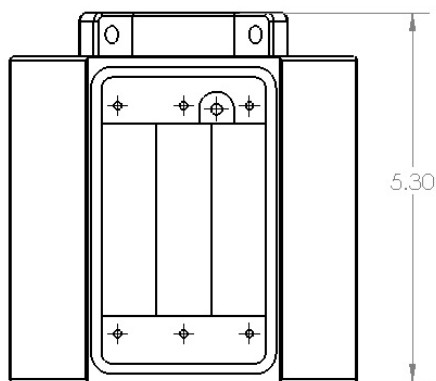
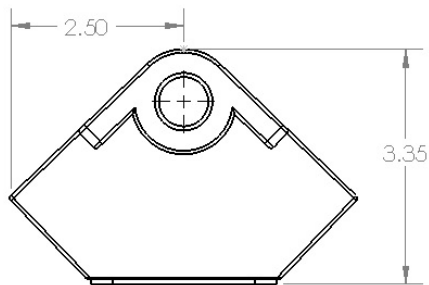
## FDT CORNER DEVICE BOX - 1 INLET

### DESCRIPTION

The corner box series simplifies conduit runs by easily navigating internal corners in a wide variety of applications.



### TECHNICAL DATA



WEIGHT: 4lbs

P/N: FDT-7524

### FEATURES

- Single Gang
- Zinc Electroplated Steel
- 1 X 3/4" Threaded Conduit Hubs
- Ground Screw
- Fits all FS & FD Flush Accessories
- Corner Mounting Lugs Chamfered
- Entries for Safe Cable Pulling

**SF INDUSTRIES**

1 979 337 2355  
sales@sfindustriesusa.com  
www.sfindustriesusa.com

1910 EAST TOM GREEN ST  
STE 1A  
BRENHAM TEXAS 77833

INNOVATION.  
QUALITY.  
CUSTOMER SERVICE.



**SF Industries**  
1910 East Tom Green St, Ste 1A  
Brenham, TX 77833  
Phone: 1 979 337 2355  
E-mail: [sales@sfindustriesusa.com](mailto:sales@sfindustriesusa.com)  
Website: [www.sfindustriesusa.com](http://www.sfindustriesusa.com)