

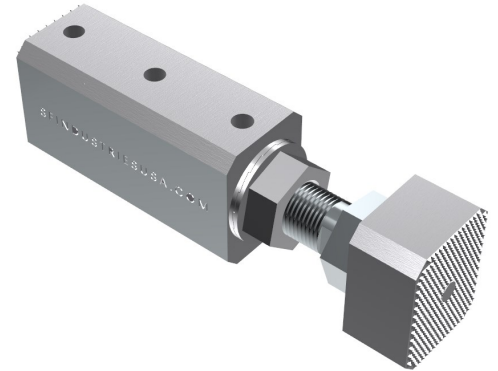


TECHNICAL DATA SHEET

BEAM ANKR - I-BEAM MOUNTING BRACKET

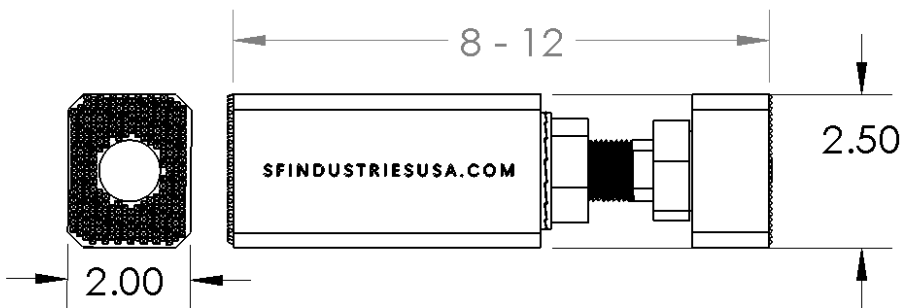
DESCRIPTION

The BEAM ANKR is a between flange tension mounted bracket for a wide range of loads up to 162 lbs on standard beams. Adjustable to fit between beam flanges from 8 to 12". The mounting surface is pre-drilled and tapped for custom mounting and standard strut installation. Additional bracket plates are available for a number of OEM light fixtures and other loads.



P/N: SFIBA-81012

TECHNICAL DATA



162 lb Load Rating

Weight 3 lbs

700 lb Pull Out Force

Clamp Bolt Torque 105 ft lbs

3/8" Threaded Mounting Holes

LOAD DATA

Table of max load by distance from BEAM ANKR mounting surface to load center of gravity.

Distance (in)	2	4	6	8	10	12	14	16	18	20
Load (lbs)	162	100	72	57	47	40	34	30	27	25

FEATURES

Anodized 6061 Aluminum

Knurled Gripping Surfaces

High Strength Clamping Bolt

Fully Adjustable from 8-12"

No Drilling, Welding or Bolting

Simple Installation

Temporary or Permanent Applications

SF INDUSTRIES

1 979 337 2355

sales@sfindustriesusa.com

www.sfindustriesusa.com

1910 EAST TOM GREEN ST

STE 1A

BRENHAM TEXAS 77833



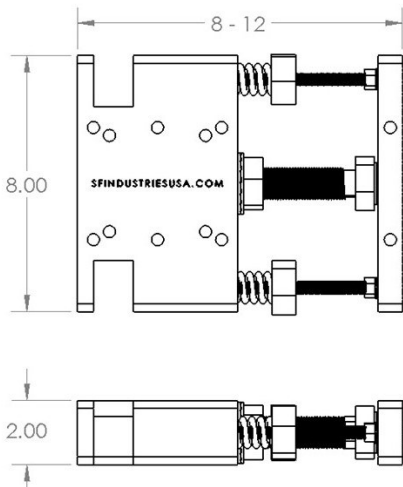
TECHNICAL DATA SHEET

BEAM ANKR MAX - BEAM MOUNTING BRACKET

DESCRIPTION

The BEAM ANKR MAX is a between flange tension mounted bracket for a wide range of loads up to 310 lbs. Adjustable to fit between beam flanges from 8 to 12". The mounting surface is pre-drilled and tapped for custom mounting and standard strut installation. Additional bracket plates are available for a number of OEM light fixtures and other loads.

TECHNICAL DATA



- 310 lb Load Rating
- 1200 lb Pull Out Force
- Weight 8 lbs
- Clamp Bolt Torque 105 ft lbs
- 3/8" Threaded Mounting Holes

LOAD DATA

Table of max load by distance from BEAM ANKR mounting surface to load center of gravity.

Distance (in)	2	4	6	8	10	12	14	16	18	20
Load (lbs)	310	186	133	103	84	71	62	55	49	44



P/N: SFIBAM-81011

FEATURES

- Anodized 6061 Aluminum
- Knurled Gripping Surfaces
- High Strength Clamping Bolt
- High Torque Spring System
- Fully Adjustable from 8-12"
- No Drilling, Welding or Bolting
- Simple Installation
- Temporary or Permanent Applications

SF INDUSTRIES

1 979 337 2355
 sales@sfindustriesusa.com
 www.sfindustriesusa.com

1910 EAST TOM GREEN ST
 STE 1A
 BRENHAM TEXAS 77833